

FREEHOLD



House - Semi-Detached

ELEVEN MILE LANE SUTON WYMONDHAM NORFOLK NR18 9JL

Offers In Excess Of

£400,000

FEATURES

- Extended Family Home
- Sitting Room
- Wc
- Field Views
- Generous Parking
- Five Bedrooms
- Kitchen/Family Room
- Ensuite
- Garage
- 0.25 acre plot (stms)



5 Bedroom House - Semi-Detached located in Sutton

Nestled along Eleven Mile Lane in Sutton, Norfolk, this exceptional semi-detached house presents a rare opportunity for those seeking a spacious family home in a picturesque rural setting. Set on a generous 0.25-acre plot (subject to measured survey), the property boasts stunning field views to the front and field beyond to the rear, creating a serene backdrop for everyday living.

Upon entering, you are greeted by a welcoming entrance hall that leads to a versatile downstairs bedroom or snug, perfect for relaxation or as a guest room. The inviting sitting room offers a comfortable space for family gatherings, while a convenient WC adds to the practicality of the ground floor. The heart of the home is undoubtedly the expansive kitchen/dining/family room, which is bathed in natural light and features doors that open out to the rear garden, making it an ideal space for entertaining.

The upper floor is home to a spacious principal bedroom complete with a generous ensuite shower room, ensuring a private retreat for the homeowners. Additionally, there are three further well-proportioned bedrooms and a family bathroom, providing ample accommodation for a growing family.

Outside, the property continues to impress with its gardens and extensive parking for up to nine vehicles, complemented by a carriage driveway. The gated side garden leads to a large lawned area, perfect for children to play or for hosting summer gatherings. A detached garage and an undercover seating area, which could easily accommodate a hot tub, enhance the outdoor experience. Perfect for al fresco dining during the warmer months.

In summary, this larger-than-average extended semi-detached family home in Sutton offers a wonderful blend of space, comfort, and rural charm, making it

an ideal choice for families looking to settle in a peaceful yet accessible location between Wymondham and Attleborough and local to Wymondham college. Come and view your new home.

Entrance Hall

Sealed unit double glazed door to the front with stairs to the first floor landing, oak doors to bedroom four, wc and sitting room.

Wc

Sealed unit double glazed window to the side and wc.

Bedroom Four

12'0 x 10'0

Sealed unit double glazed window to the front and rear and radiator.

Sitting Room

12'0 x 11'0

Sealed unit double glazed window to the front, radiator, feature panel wall to far wall and oak door to the inner hall.

Inner Hall

Sealed unit double glazed window to the rear, wall mounted oil boiler, oak doors to the cupboard and the kitchen/dining room.

Kitchen/Dining Room

22'0 max x 17'0 max

Sealed unit double glazed doors to the rear along with a window overlooking the rear garden. Sealed unit double glazed window to the front. Range of base and eye level units with integrated appliances to include, oven, hob cooker hood, dishwasher and space for fridge/freezer. Splash backs and tiled floor.

Landing

Sealed unit double glazed window to the front with oak style doors to all bedrooms and the family bathroom. Airing cupboard.

Principal Bedroom

22'0 max x 17'0 max

Sealed unit double glazed windows to both aspects overlooking farmland and the rear garden. Radiator. Range of built in wardrobes and oak style door to the ensuite shower room.

Ensuite

Spacious ensuite offering vanity wash hand basin, wc and walk in double shower with tiled back splash. Inset spot lights. Sealed unit double glazed window to the front.

Bedroom Two

11'0 x 9'0

Sealed unit double glazed window to the front and radiator.

Bedroom Three

12'0 x 10'0

Sealed unit double glazed window to the front and rear aspects overlooking farmland to the front and garden to the rear. Radiator.

Bedroom Five

9'0 x 5'0

Sealed unit double glazed window to the rear, cupboard and radiator.





NORWICH SALES | 3 VISION PARK QUEENS HILLS, NORWICH, NR8 5HD

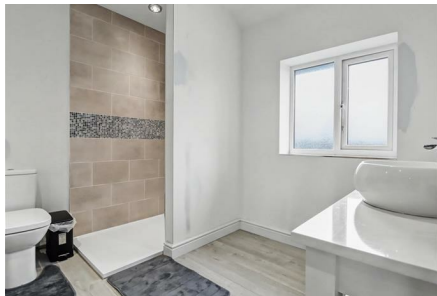


Family Bathroom

Sealed unit double glazed window to the rear, bath with screen and shower wash hand basin. Tiled splash backs.

Outside

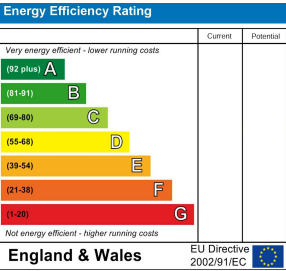
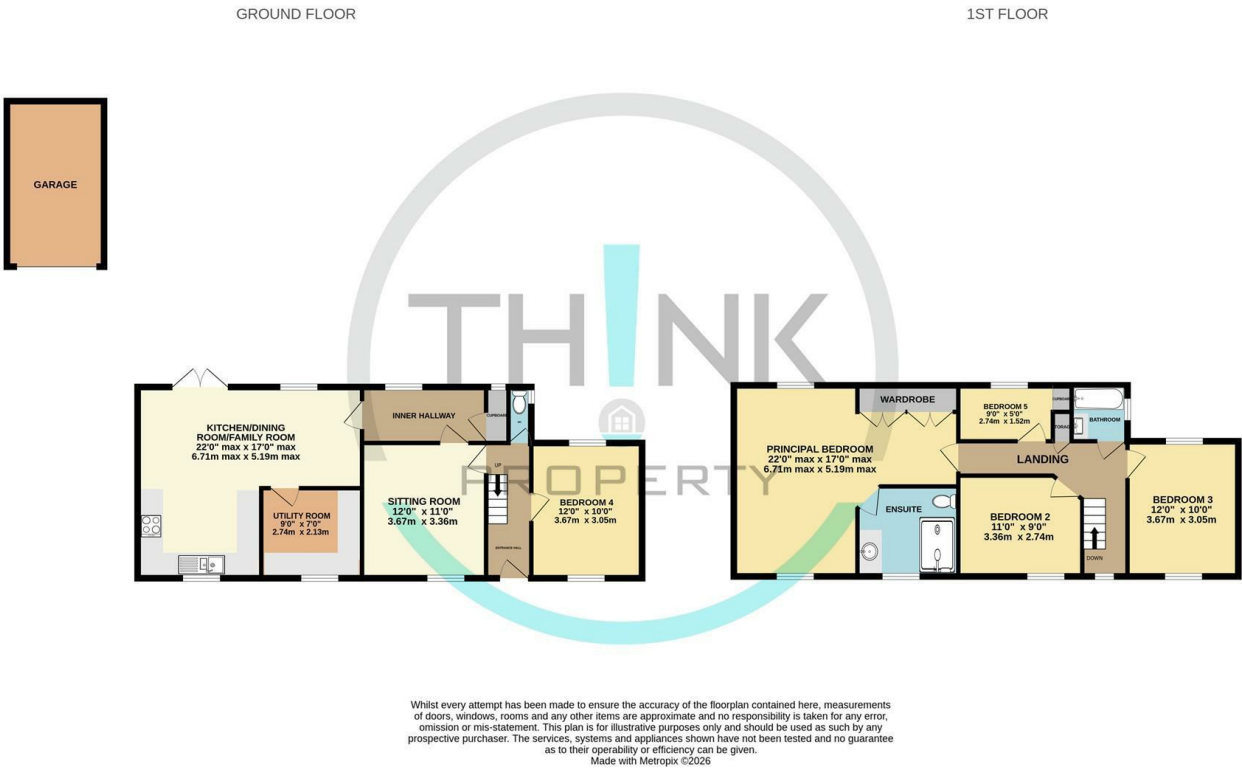
The front of the property is screened from the lane with slatted fencing with carriage driveway and further parking to the side. Gated access to the rear garden which is mainly laid to lawn with detached garage and undercover seating area, fairly unoverlooked and plenty of space to catch the sunshine for the summer ahead.



Call us on
01603 338433
norwich@thinkproperty.ltd
<https://www.thinkproperty.ltd/>

Council Tax Band

B



Agents Note: Whilst every care has been taken to prepare these particulars, they are for guidance purposes only. All measurements are approximate and are for general guidance purposes only and whilst every care has been taken to ensure their accuracy, they should not be relied upon and potential buyers are advised to recheck the measurements.

